



Matthew Hayter
082 569 1765
matt@upsideproperties.co.za



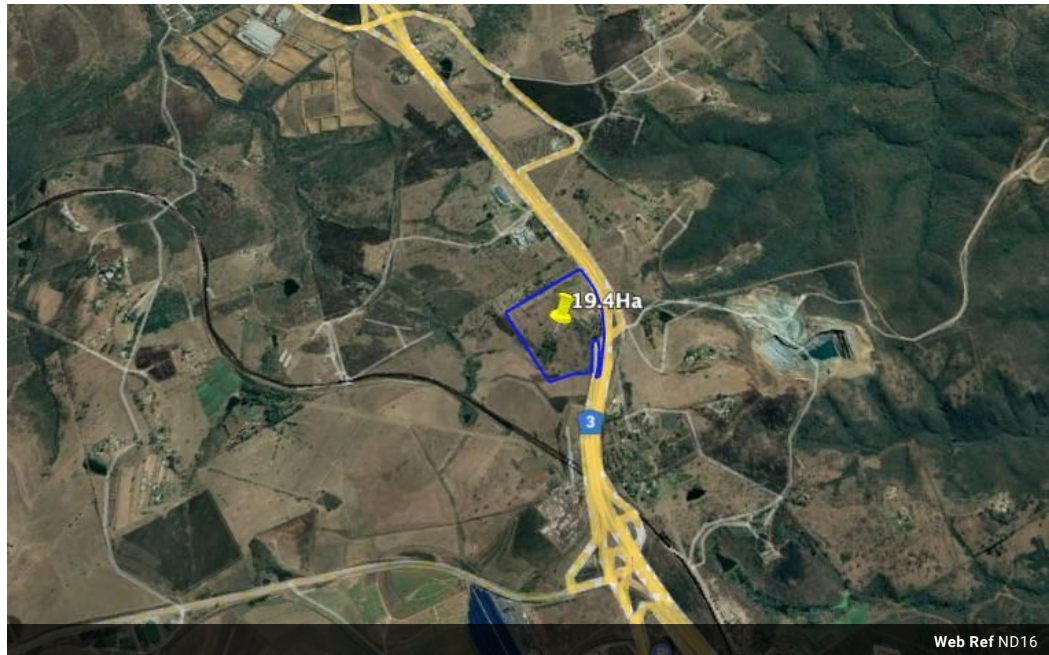
Loy de Jager
082 855 9591

loy@upsideproperties.co.za

Contact Head Office

031 531 1103

11 Aubrey Drive
Glenashley
Durban
4051



Web Ref ND16



RITA LIGHT INDUSTRIAL PARK

Vacant Land (23)
From R250 per m²
Size from 1,500m² to 21,500m²

Camperdown Development Sights- 1500sqm- 21500sqm

RITA LIGHT INDUSTRIAL PARK
Total Development Size - 19.4Ha Sites ranging from 1 500sqm to 21 500sqm
Prices from R250/sqm - R400/sqm (depending on size and location)
Zoned - Light Industrial
Highway exposure

Camperdown is located in the Umgungundlovu District Municipality in the KwaZulu-Natal, South Africa, some 60km from Durban and 20km from Pietermaritzburg. The N3 freight corridor, supposedly the busiest in the country, runs through camperdown connecting Durban and Gauteng. With Durban being home to the busiest port in Sub-Saharan Africa and Gauteng being South Africa's economic heartland, it brings huge potential to...

Features

- ✓ N3 highway exposure
- ✓ R250/m²- R400/m²
- ✓ 1500sqm- 21500sqm
- ✓ Zoned industrial
- ✓ 23 Sights For Sale