



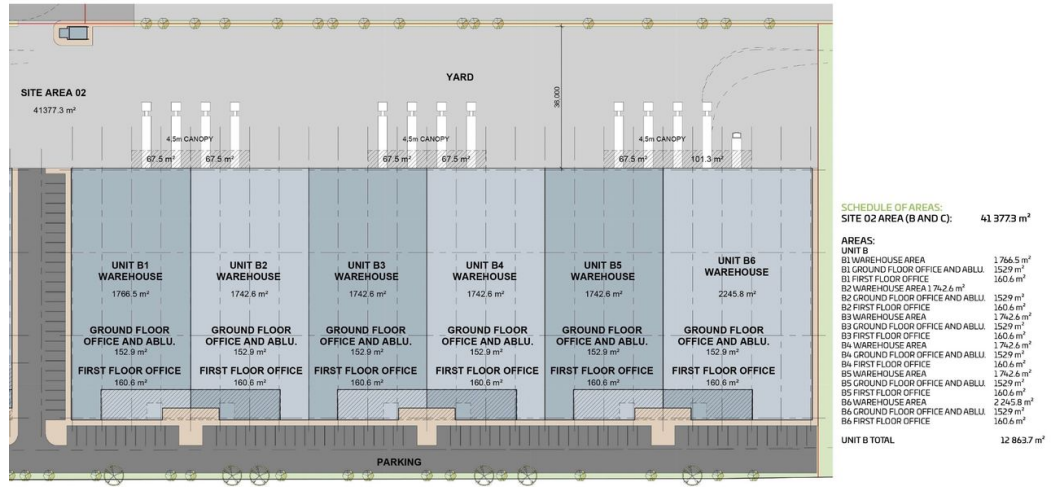
Matthew Hayter
082 569 1765
matt@upsideproperties.co.za

Contact Head Office

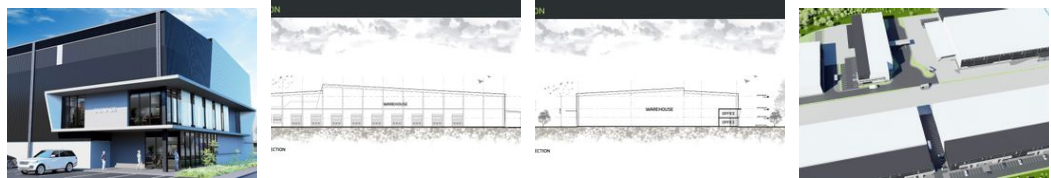
031 531 1103

11 Aubrey Drive
Glenashley
Durban
4051

PLAN - WAREHOUSE B



Web Ref CL2735



R217,936 pm

Gross Monthly Rental R217,936 Excl. VAT



2056sqm Warehouse Development To Let in Farrier Business Park, Westtown, Shongweni.

2056sqm Warehouse Development To Let in Farrier Business Park, Westtown, Shongweni.

- Total Floor Area - 2056sqm
- Warehouse - 1742.6
- Ground Floor Office & Ablution - 152.9sqm
- First Floor Office - 160.6
- Asking Price - R28,785,400 = R14000/sqm (dependant on specifications)
- 12m to Eaves Height
- Super Link Access
- Sprinkler Systems
- Ample height for racking
- Multiple Roller Doors
- 24 hour security

Farrier Business Park is logistics park forming part of the all new West Town development.

The N3 corridor, particularly the Shongweni region, has emerged as a key strategic area for industrial and commercial development with Westtown positioned as the closest new industrial development node to the bustling Durban Port. Its strategic

Features

Zoning Industrial

Interior

Air Conditioning Yes
Power 3 Phase Yes

Exterior

Security Yes

Sizes

Floor Size 2,056m²