



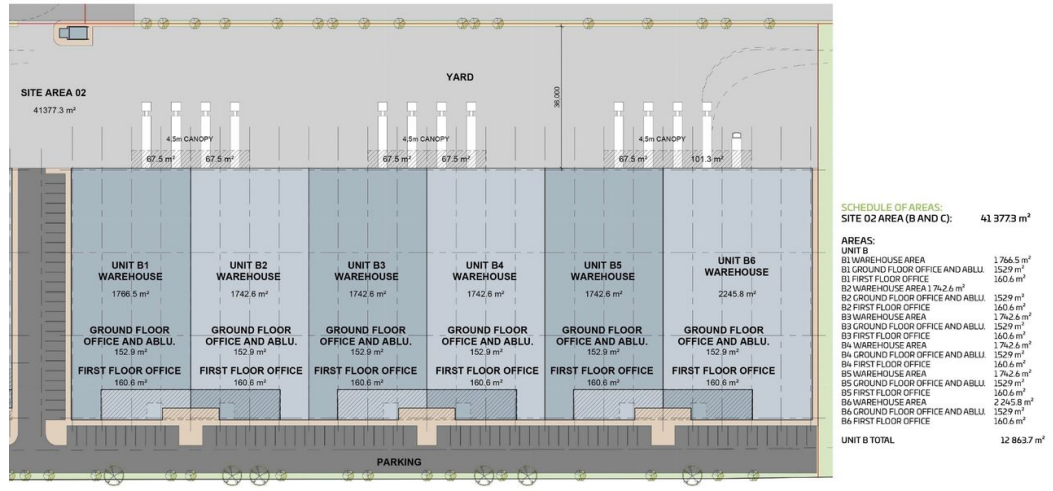
**Matthew Hayter**  
082 569 1765  
matt@upsideproperties.co.za

Contact Head Office

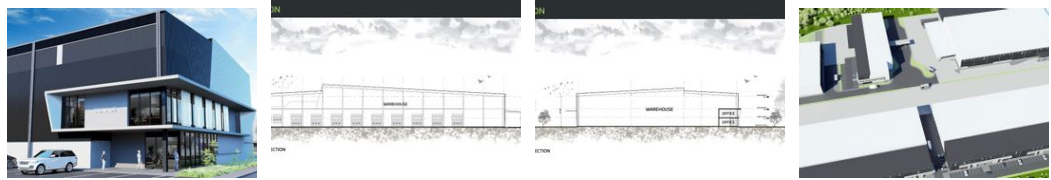
031 531 1103

11 Aubrey Drive  
Glenashley  
Durban  
4051

### PLAN - WAREHOUSE B



Web Ref CL2734



R29,120,000



2,080m<sup>2</sup> Warehouse For Sale in Shongweni

2080sqm Warehouse development For Sale in Farrier Business Park, Westown, Shongweni.

- Total Floor Area - 2080sqm
- Warehouse - 1766.5
- Ground Floor Office & Ablution - 152.9sqm
- First Floor Office - 160.6
- Monthly Rent - R29,120,000 = R14000/sqm (dependant on purchaser's specs)
- 12m to Eaves Height
- Super Link Access
- Sprinkler Systems
- Ample height for racking
- Multiple Roller Doors
- 24 hour security

Farrier Business Park is logistics park forming part of the all new West Town development.

The N3 corridor, particularly the Shongweni region, has emerged as a key strategic area for industrial and commercial development with Westown positioned as the closest new industrial development node to the bustling Durban Port. Its strategic

### Features

**Zoning** Industrial

**Interior**

Air Conditioning Yes  
Power 3 Phase Yes

**Exterior**

Security Yes

**Sizes**

Floor Size 2,080m<sup>2</sup>