



**Marty de Jager**  
 072 607 6715  
 marinus@upsideproperties.co.za

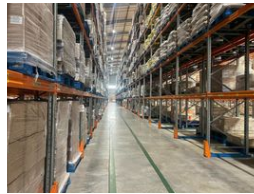
Contact Head Office

031 531 1103

11 Aubrey Drive  
 Glenashley  
 Durban  
 4051



Web Ref CL2035



R1,645,000 pm

Gross Monthly Rental R1,645,000 Excl. VAT

 0  0

### 17,323sqm Warehouse to let in Riverhorse Valley

Industrial/logistics warehouse to let in Riverhorse Valley, Durban.

#### Property Specifications:

- Floor Area - 17 323sqm
- Yard - +- 7000sqm
- Monthly Rent - R1,645,000pm + VAT
- 8 Dock Levellers
- 1 roller door with ramp access
- 7 on grade roller doors
- Roof height - 15m +
- Sprinkler systems with pumps and tanks
- Super link access
- 24 hour security

Riverhorse Valley is centrally located in the northern parts of Durban. The node borders the N2 on both ends. The area has great accessibilities onto the main arterial roads via Queen Nandi Drive, N2 and North Coast Road. It is a stone's throw away from Red Hill Glen Anil and the M19. The area is amongst many public transport stops and amenities including the heart hospital and

### Features

**Zoning** Commercial

#### Interior

Air Conditioning Yes  
 Power 3 Phase Yes

#### Exterior

Security Yes

#### Sizes

Floor Size 17,323m<sup>2</sup>